

## HISTORICAL HIGHLIGHTS OF MISSISSIPPI COLLEGE

Mississippi College, originally known as Hampstead Academy, received its first charter, signed by Governor David Holmes, on January 24, 1826. The name was changed to Mississippi Academy in 1827 at the request of the board of trustees.

Three years later, on December 18, 1830, having become an institution of collegiate rank, the name was changed to Mississippi College. It was the third such institution in Mississippi, but as the other two institutions no longer exist, Mississippi College today has the distinction of being the oldest institution of higher learning in the state.

Mississippi College, during its early years, was not church-related and was once offered to be ‘*the*’ State University. It has past affiliations with the community, the Methodists, the Presbyterians, back to the community and since 1850 it has been operated by the Mississippi Baptist Convention through an elected Board of Trustees.

A private institution, the College in its early years was coeducational and in 1831, Mississippi College became the first such college in the U.S. to grant a degree to a woman.

In 1850 the Female department was discontinued; and in 1853 a Central Female Institute, later renamed Hillman College, was established in Clinton. In 1942 Mississippi College purchased and absorbed Hillman College, and the institution was again coeducational.

The Civil War caused Mississippi College to suffer: its endowment was destroyed, its student body disbanded, and its buildings deteriorated. Under the leadership of Dr. Warren S. Webb (1873-1891) the college stabilized.

Under the administration of Dr. W. T. Lowrey (1898-1911), the endowment fund was renewed and the plant was greatly improved.

The administration of Dr. J. W. Provine (1911-1932) was a fruitful period, seeing the completion of Provine Science Building (largely constructed in Dr. Lowrey’s administration), and the construction of Lowrey Hall, Alumni Hall, Farr-Hall Hospital, Jennings Hall, Ratliff Hall and Chrestman Hall. The endowment was increased to more than \$500,000 and in 1922 the College was initially accredited by the Southern Association of Colleges and Schools (SACS). The enrollment reached 400.

During the twenty-five year administration of Dr. D. M. Nelson (1932-1957), the college successfully withstood the depression and emerged stronger. During World War II, women were once again admitted and the enrollment increased rapidly. The physical plant was expanded and Nelson Hall Administration Building, Hederman-Gunter Residence Hall and Mary Nelson Residence Hall were erected; Lowrey Hall and Ratliff Residence Hall were enlarged and improved.

The College continued to grow under the administration of Dr. R. A. McLemore (1957-1968). Enrollment increased and the following buildings were constructed: Leland Speed Library, Aven Fine Arts Building (both of which were begun before Dr. Nelson retired), B. C. Rogers Student Center, Hederman Science Building, Latimer-Webb Residence Hall, Whittington Resident Hall, Self Hall and Hendrick House (President’s home). The old cafeteria was converted into a women’s gym; the Old Chapel (now Provine) was restored; Ratliff and Chrestman residence halls were renovated.

— Dr. Lewis Nobles' administration (1968-1993) saw continued growth in the areas of enrollment and quantity and qualifications of faculty. An addition to the library was made and the electronic media center emerged. Other construction included: Cockcroft Hall for the School of Nursing and Department of Home Economics, A. E. Wood Coliseum, and the James Moody Adams Field House. The Law School building in downtown Jackson was remodeled and was occupied by the School of Law in 1981. The Latimer House, a Victorian home, was dedicated in 1991.

— With the resignation of Dr. Nobles on August 3, 1993, Dr. Rory Lee, Vice President for Institutional Advancement was named Acting President.

— Dr. Howell Todd began his administration July 1994, and began physical improvement to maintain and replicate the architectural character of the campus. Renovations and remodeling have transformed Nelson Hall, Alumni Hall, Jennings Hall and Jennings Annex, Self Hall, Farr Hall, and Latimer-Webb Residence Hall. Remodeling was completed on B. C. Rogers Student Center, Hederman Science Building, Mary Nelson Residence Hall, and Hederman-Gunter Residence Hall. New construction included: The New Men's Residence Hall, The New Women's Residence Hall and the MC connector building between Self Hall and Hederman Science Building. The grounds have also undergone a make-over including The Piazza between Jennings and Alumni. New parking lots have emerged and plans are underway for the ground floor of a parking garage.

A 106,000 square foot Heathplex now stands in place of the old tennis courts; new tennis courts, baseball field and practice fields have been built. A campus-wide computer network has been installed to offer access to the Internet and act as a communication link for all administration, faculty, staff and students.

— Every ten years since 1922, Mississippi College undergoes a self-study that culminates in a reaffirmation visit from a group of peers representing the Commission on Colleges of the Southern Association of Colleges and Schools (SACS). In 2002, Mississippi College was reaffirmed by SACS.

— On July 1, 2001, Dr. Lloyd E. Roberts, Vice President for Business Affairs and Professor in the School of Business, also became Interim President of the College during the search for a replacement for retiring President Howell W. Todd.

— Dr. Lee G. Royce began his administration in July 2002. During Dr. Royce's presidency, Lowrey Hall, Ratliff Hall and Aven Auditorium have been renovated, Hederman and Gunter Halls have been refurbished, a new football field, soccer field, track and new practice fields have been built, stands have been added at the Tennis Complex, a new campus entrance sign was constructed, new covered batting cages have been built at the baseball field, and a Gore sculpture has been added to the campus. Also, a new Art Gallery has been constructed and 3<sup>rd</sup> floor, Alumni Hall, has been renovated as Alumni Conference Center. The Accelerated Degree Program has been established, as well as new sites in Madison and Rankin counties which are bringing increased enrollment. Other significant accomplishments include creation of the Mississippi College Foundation Board, increased fund raising efforts which include an increase in alumni giving, beautification of the campus, increase in enrollment from 3,300 to 4,700, and endowment growth from \$32,000,000 to \$52,000,000. Mississippi College's vision to be a university recognized for academic excellence and commitment to the cause of Christ remains strong.

## **CURRENT ADMINISTRATION 2008-2009**

### **General Officers**

President	Dr. Lee G. Royce
Vice President for Academic Affairs	Dr. Ron Howard
Chief Financial Officer	Donna Lewis
Vice President for Administration and Government Relations	Dr. Steve Stanford
Vice President for Advancement	Dr. Bill Townsend
Vice President for Christian Development	Dr. Eric Pratt
Vice President for Planning and Assessment	Dr. Debbie C. Norris
Vice President for Enrollment Services	Dr. Jim Turcotte

### **Academic Deans**

Dean of the School of Christian Studies and the Arts	Dr. Wayne VanHorn
Dean of the School of Humanities and Social Sciences	Dr. Gary Mayfield
Dean of the School of Science and Mathematics	Dr. Stan Baldwin
Dean of the School of Education	Dr. Don W. Locke
Dean of the School of Law	Dr. Jim Rosenblatt
Dean of the School of Nursing	Dr. Mary Jean Padgett
Dean of the Graduate School	Dr. Debbie C. Norris
Dean of the School of Business	Dr. Marcelo Eduardo

## Administrative Staff

Assistant Controller	Marilyn Allen, CPA
Academic Computing Director	Forster Sun
Accelerated Degree Program Coordinator	Michele Ricker
Administration and Finance Director, Law	Emily Kennedy
Alumni Affairs Director	Ross Aven III
Assistant Dean of Admissions, Law	Patricia Evans
Associate Admissions Director	Kyle Brantley
Athletics Director	Mike Jones
Baptist Student Union Associate Director	Heidi Cheatham
Baptist Student Union Director	Ben Maddox
Bursar	Karen Key
Career Services Coordinator	Karen Lindsey-Lloyd
Community Service Center Director	Sharon Barnes
Computer Services Director	William Cranford
Continuing Education Director	Ken Gilliam
Controller	Cheryl Mobley
Counseling & Testing Center Director	Dr. Amy Christian
Development Director, Law	Thorne Butler
Enrollment Services Director	Chad Phillips
Financial Aid Director	Karon McMillan
Graduate Recruiter/Program Developer	Laura Rogers
Human Resources Director	Donna Winstead
Institutional Research Coordinator	David de Medicis
International Office Director	Jim Brackenridge
Learning Resources Center Director	Dr. Billy Lytal
Library Director, Law	Mary Miller, J.D.
Library Director, Speed Library	Kathleen Hutchison
Media Relations Director	Tracey Harrison
Payroll/Benefits Director	Donna Winstead
Physical Plant Director	Glenn Worley
Placement Director, Law	Debbie Foley
Post Office Manager	Jean Hawkins
Public Safety Director	Jerald Sherman
Purchasing/Payables Director	Dana Elmore
Radio Operations Director	Traci Maughon
Registrar	Cathy Van Devender
Scheduling Coordinator	Sherry Bobo
Sports Information Director	Christopher Brooks
Student Activities Coordinator	Cameron Armstrong
Student Development Coordinator	Joseph Odenwald
Student Health Services Liaison	Dr. Mary Jean Padgett
Student Life Director	Rick Hartfield
Student Services Director, Law	John Brown
Telecommunications Director	Mac Culpepper

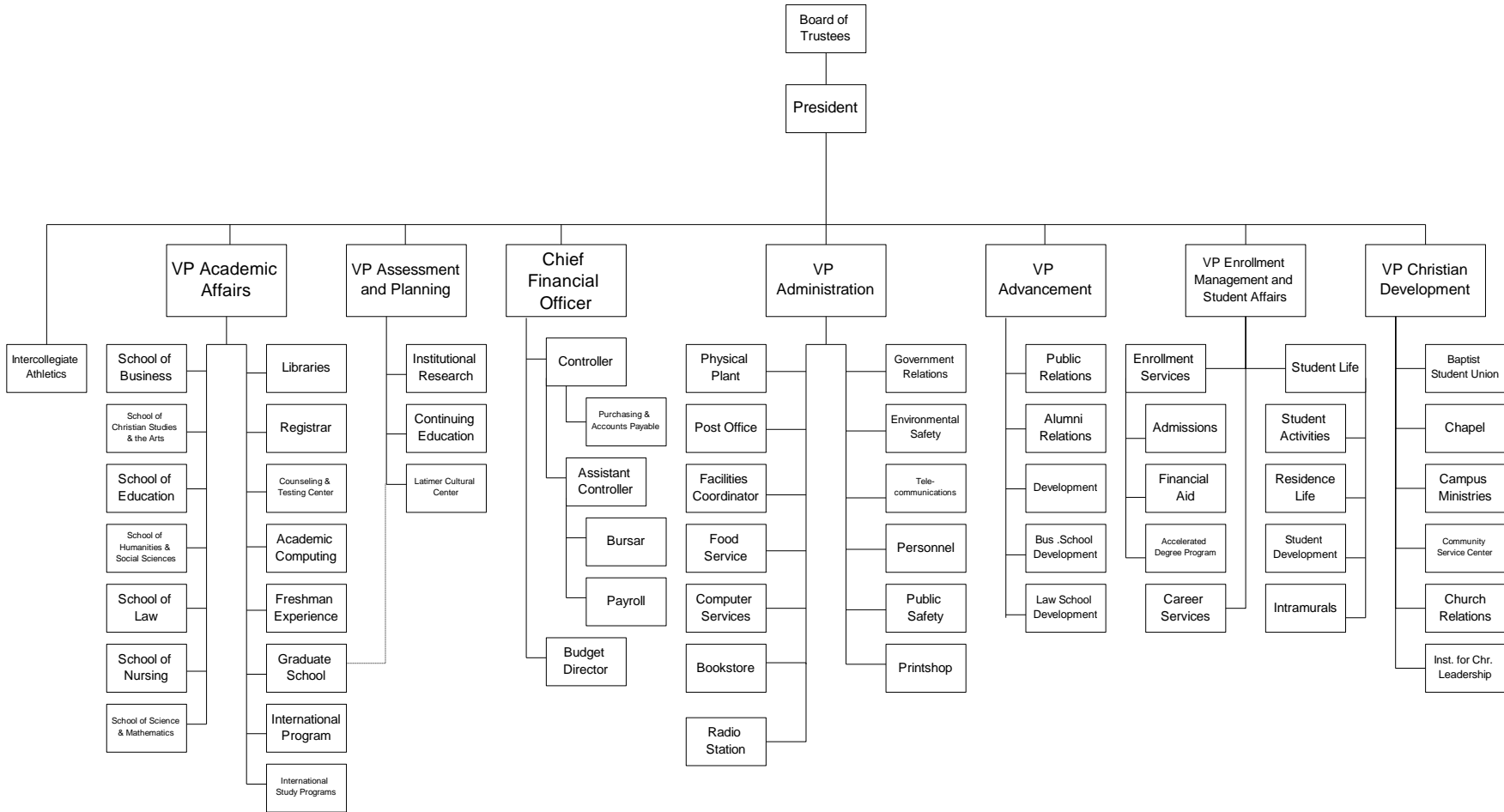
### Other Administrative Functions

Freshman Experience	Terry Dent
Developmental Studies	Emily Fokeladah
Edward L. McMillan Program of International Study	Dr. Ron Howard
Latimer Cultural Center	Dr. Debbie C. Norris
Church Relations	Dr. Eric Pratt
Institute of Christian Leadership	Dr. Wayne VanHorn

### Peer Institutions

Institution	City, State	Website
Belmont University	Nashville, TN	<a href="http://www.belmont.edu">www.belmont.edu</a>
Campbell University	Buies Creek, NC	<a href="http://www.campbell.edu">www.campbell.edu</a>
Georgetown College	Georgetown, KY	<a href="http://www.georgetowncollege.edu">www.georgetowncollege.edu</a>
Hardin-Simmons University	Abilene, TX	<a href="http://www.hsutx.edu">www.hsutx.edu</a>
Houston Baptist University	Houston, TX	<a href="http://www.hbu.edu">www.hbu.edu</a>
Mercer University	Macon, GA	<a href="http://www.mercer.edu">www.mercer.edu</a>
Oklahoma Baptist University	Shawnee, OK	<a href="http://www.okbu.edu">www.okbu.edu</a>
Ouachita Baptist University	Arkadelphia, AR	<a href="http://www.obu.edu">www.obu.edu</a>
Samford University	Birmingham, AL	<a href="http://www.samford.edu">www.samford.edu</a>
Union University	Jackson, TN	<a href="http://www.uu.edu">www.uu.edu</a>

# Mississippi College Organizational Structure



Last Updated Tues. Aug, 8, 2006

**Mississippi College is accredited by, approved by, or holds membership in the following associations.**

Accrediting Agencies	Purpose
<b>Southern Association of Colleges and Schools (SACS)</b> 1866 Southern Lane Decatur Georgia 30000-4097 404 679-4501	Accredits the University to award baccalaureate, master's degrees, and first professional doctorates in law
<b>American Bar Association, Paralegal Program</b> ABA Standing Committee on Legal Assistants 750 N. Lake Shore Drive Chicago, IL 60611 312 988-5616	Accredits the baccalaureate and master's level programs in Paralegal Studies
<b>American Association of Colleges for Teacher Education</b> 1307 New York Avenue, Suite 300 Washington, DC 20005-4701 202 293-2450	Provides standards for Elementary Education
<b>American Chemical Society</b> 1155 16 Street NW Washington, DC 20036 202 872-4589	Certifies the baccalaureate level programs in Chemistry, Biochemistry and Chemical Physics
<b>Association of Baccalaureate Social Work Program Directors, Inc. (BPD)</b> P.O. Box 151463 Alexandria, VA 22315-9998 703 971-6715	Provides information to Social Work directors
<b>Council for Accreditation of Counseling and Related Education Programs (CACREP)</b> 5999 Stevenson Avenue Alexandria, VA 22304 703 823-9800	Accredits graduate Counseling programs
<b>Council on Social Work Education (CSWE)</b> Council on Social Work Education 1600 Duke Street, Suite 300 Alexandria, VA 22314-3421 703 683-8080	Accredits the baccalaureate level program in Social Work
<b>National Association of Schools of Music</b> 11250 Roger Bacon Drive, Suite 21 Reston, VA 22090 703 437-0700	Accredits all of the baccalaureate and master's level programs in Music
<b>Association of Collegiate Business Schools and Programs (ACBSP)</b> 7007 College Blvd, Suite 420 Overland Park, KS 66211 913 339-9356	Accredits all of the baccalaureate and master's level programs in Business
<b>National Council for Accreditation of Teacher Education (NCATE)</b> 2010 Massachusetts Avenue, NW Washington, DC 20036 202 466-7496	Accredits all of the baccalaureate and graduate programs in Teacher Education
<b>Commission on Collegiate Nursing Education</b> One Dupont Circle, NW, Suite 30 Washington, DC 20036-1120 202 887-6791	Accredits the baccalaureate level program in Nursing
<b>Board of Trustees of State Institutions of Higher Learning</b> 3825 Ridgewood Road Jackson, MS 39211-6453 601 982-6690	Provides annual approval for the School of Nursing to operate within the state of Mississippi
<b>American Bar Association</b> 750 North Lake Shore Drive Chicago, IL 60611 312 988-5000	Accredits the School of Law
<b>Association of American Law Schools</b> 1201 Connecticut Ave., NW Washington, DC 20036-2605 202 296-8851	The School of Law is a member of the Association of American Law Schools
<b>International Association of Law Schools</b> 1201 Connecticut Ave., NW Washington, DC 20036-2605 202 296-8851	The School of Law is a member of the International Association of Law Schools

<b>The Association of Independent Liberal Arts Colleges for Teacher Education</b> 1077 192 <sup>nd</sup> Avenue New Richmond, WI 54017 715 246-6659	
<b>The International Multisensory Structured Language Education Council (IMSLEC)</b> 15720 Hillcrest Road Dallas, TX 75248 972 774-1772 ext. 227	

### **CAMPUS SIZE AND LOCATION**

Mississippi College is the largest private college in the state. Located in the community of Clinton in the center of the state, the College is only ten minutes away from Jackson, the state capital and largest metropolitan area in Mississippi.

The educational needs of a metropolitan area are changing, and Mississippi College responds to those needs by expanding its instructional programs. About 3,100 students are enrolled for undergraduate studies, and around 1,200 students are enrolled in the Graduate School which offers work leading to fifteen graduate degrees. In response to the need for legal education in the area of the state capital, Mississippi College also has a School of Law.

### **OFFICE OF PUBLIC SAFETY**

#### **SERVICES OFFERED**

The role of the Office of Public Safety is to work towards ensuring the safety of all individuals while on campus and provide for the security of all properties of the college. In doing so, it is recognized that security at Mississippi College is everybody's business. Although no community can be totally risk-free in today's society, the office works toward securing partnerships with students, faculty, staff, administration and guests to create an atmosphere that is safe and conducive to learning. The office is also responsible for the control, regulation and flow of traffic on Mississippi College property. The Office of Public Safety is located on the First Floor of Alumni Hall and can be reached at 925-3204.

### **CAMPUS CRIMES REPORTED TO SECURITY OR LOCAL POLICE**

#### **MAIN CAMPUS (CLINTON)**

<b>Offense</b>	<b>2005</b>	<b>2006</b>	<b>2007</b>	<b>2008</b>	<b>2009</b>
<b>Murder</b>	<b>0</b>	<b>0</b>	<b>0</b>	<b>0</b>	<b>0</b>
<b>Robbery</b>	<b>1</b>	<b>1</b>	<b>0</b>	<b>0</b>	<b>0</b>
<b>Sex Offense</b>	<b>0</b>	<b>0</b>	<b>0</b>	<b>0</b>	<b>0</b>
<b>Aggravated Assault</b>	<b>1</b>	<b>1</b>	<b>0</b>	<b>0</b>	<b>0</b>
<b>Burglary</b>	<b>10</b>	<b>14</b>	<b>29</b>	<b>34</b>	<b>29</b>
<b>Motor Vehicle Theft</b>	<b>3</b>	<b>0</b>	<b>1</b>	<b>3</b>	<b>1</b>
<b>Arson</b>	<b>0</b>	<b>0</b>	<b>0</b>	<b>7</b>	<b>5</b>



**LAW SCHOOL (JACKSON)**

Offense	2005	2006	2007	2008	2009
<b>Murder</b>	0	0	0	0	0
<b>Robbery</b>	0	0	0	0	0
<b>Sex Offense</b>	0	0	0	0	0
<b>Aggravated Assault</b>	0	0	0	0	0
<b>Burglary</b>	0	0	0	0	0
<b>Motor Vehicle Burglary</b>	0	0	0	0	0

**ARRESTS MADE FOR REPORTED CRIMES****MAIN CAMPUS (CLINTON)**

Crime	2005	2006	2007	2008	2009
<b>Liquor Law Violations</b>	0	0	0	1	0
<b>Drug Abuse Violations</b>	0	0	0	2	3
<b>Weapon Possession</b>	0	0	0	0	0

**LAW SCHOOL (JACKSON)**

Crime	2005	2006	2007	2008	2009
<b>Liquor Law Violations</b>	0	0	0	0	0
<b>Drug Abuse Violations</b>	0	0	0	0	0
<b>Weapon Possession</b>	0	0	0	0	0

No.	Key Indicators	2004-05	2005-06	2006-07	2007-08	2008-09	2009-2010
1	Board Students - % of capacity for the fall	88%	92%	95%	98%	93%	95%
2	Board Students - % of capacity for the spring	80%	83%	85%	86%	84%	87%
3	Applications - Freshmen	1,820	2,038	1,685	1,642	1,728	1,763
4	Applications - Graduate Programs	394	556	708	1,043	1,011	941
5	Applications - Law	1,136	1,261	1,122	1,153	1,166	1,316
6	Applications - Accelerated Program	232	279	233	323	281	250
7	Applications - Transfer	740	907	793	978	979	1,032
8	Average ACT scores - Freshmen	23.5	23.0	23.1	23.1	23.1	23.5
9	ACT Composite 25th and 75th Percentiles	20-27	20-26	20-26	20-26	20-26	20-27
10	ACT English 25th and 75th Percentiles	21-29	20-27	20-28	21-27	20-28	20-29
11	ACT Math 25th and 75th Percentiles	18-25	17-25	18-25	18-24	18-24	18-25
12	Retention Rate - Freshman to Sophomore	70%	73%	68%	77%	69%	67%
13	Number of New Freshmen (With IEP)	389	395	487	549	540	474
14	Number of New Transfers (With IEP)	330	371	286	351	374	360
15	Number of New Law Students	183	202	196	192	197	196
16	ADP Headcount	220	304	371	438	409	420
17	Accelerated Degree Program-Retention	63%	61%	64%	54%	59%	64%
18	Graduate Headcount (With IEP)	704	825	932	1,047	1,185	1,187
19	Overall % Baptist	51%	49%	52%	52%	51%	52%
20	Overall % Mississippi Baptist	45%	43%	46%	45%	44%	45%
21	Overall % MSBC Church Membership	28%	28%	30%	29%	26%	26%
22	Additions to Endowment	\$2,145,641	\$951,616	\$950,452	\$1,583,600	\$732,350	\$792,773
23	# \$1,000+ donors	299	395	414	426	345	366
24	\$ additions to the capital fund	\$ 1,289,908	\$ 1,862,994	\$ 1,116,453	\$ 1,469,633	\$1,793,275	\$769,686
25	\$ undesignated for the Annual Fund	\$ 341,113	\$ 254,961	\$ 274,553	\$ 274,310	\$282,358	\$263,680
26	% of alumni giving	7.75%	6.86%	6.54%	5.80%	5.03%	6.44%
27	Total Endowment (Market)	\$42.6M	\$48.3M	\$51.0M	\$52.1M	\$50.8M	\$55.7M
28	Total institutional discount as a % of UG tuition	52%	50%	50%	49%	48%	46%
29	Loan Default Rates						
30	Perkins	14%	10%	13%	10%	9%	20%
31	Stafford	1%	2%	1%	2%	2%	3%
32	Nursing	3%	5%	2%	3%	4%	4%
33	Net Asset Value	\$102,108,094	\$114,658,533	\$127,797,821	\$136,125,854	\$138,699,109	\$145,431,450
34	Undergraduate Credit Hours	70,631	74,057	73,694	83,256	87,361	88,975
35	Education	11,907	12,342	12,559	13,435	15,434	16,720
36	Nursing	3,795	3,920	4,032	4,137	4,190	4,296
37	Arts & Sciences	44,349	46,950	44,677	50,434	52,613	53,807
38	Business	10,580	10,845	12,426	15,250	15,124	14,152

39	Graduate Credit Hours	10,688	12,069	13,370	15,572	17,999	18,355
40	Education	5,928	7,010	7,407	8,684	9,156	9,577
41	Arts & Sciences	3,011	3,355	4,093	4,408	5,704	5,792
42	Business	1,749	1,704	1,870	2,480	3,139	2,986
43	Interdisciplinary Studies credit hours	465	560	642	1,045	1,059	513
44	Law program credit hours	13,354	15,532	15,512	15,832	16,398	15,879
45	<b>TOTAL Credit Hours (1st Summer-Spring)</b>	<b>95,138</b>	<b>102,218</b>	<b>103,218</b>	<b>115,705</b>	<b>122,817</b>	<b>123,722</b>
46	Fall Term Enrollment <b>**IPEDS #s Oct 15</b>	3,588	3,905	4,038	4,467	4,741	4,796
47	% Faculty w/Terminal Degree	77%	75%	79%	79%	80%	80%
48	Student/Faculty Ratio--Fall	15:1	15:1	15:1	16:1	17:1	16:1
49	% of Fall Credit Hours Taught by Adjunct Faculty and GAs (Main Campus)				22%	24%	24%
50	Five-year Graduation Rate	58%	59%	59%	57%	52%	56%
51	Endowment/Student	\$11,873	\$12,369	\$12,630	\$11,663	\$10,721	\$11,631
52	Edu & Gen Expend/Credit Hrs	420	437	417	416	412	450
53	Instructional Expend/Credit Hrs	216	222	217	216	215	235
54	Inst & Academic Supp, % of E & G	29%	27%	26%	28%	29%	29%
55	Student Services, % of E & G	16%	16%	16%	17%	16%	17%
56	Authorized Positions	423	435	434	457	469	491
57	Student/Authorized Position Ratio	8:1	9:1	10:1	10:1	10:1	10:1
58	Full-Time Faculty including Librarians	174	175	175	178	184	194
59	Adjuncts	121	148	176	213	246	258
60	Avg Faculty Salary (MAIN CAMPUS)	46,372	45,946	48,700	52,716	54,726	56,511
61	Faculty Fringe Benefits % (MAIN CAMPUS)	20%	20%	23%	25%	24%	24%
62	Avg Faculty Salary (LAW CAMPUS)	79,257	85,510	88,403	87,868	92,262	99,038
63	Faculty Fringe Benefits % (LAW CAMPUS)	18%	18%	18%	20%	19%	18%

Alumni Giving percentage calculated differently in years prior to FY2001

Not able to match counts with years prior to FY2003 for number of authorized positions--staff FTE.

The drop in dorm capacity from 2003-04 to 2004-05 was due to the renovation and reopening of Ratliff Hall.

Line 25-Additions to the Capital Fund is now reporting only gift additions to the capital fund as of 2009.