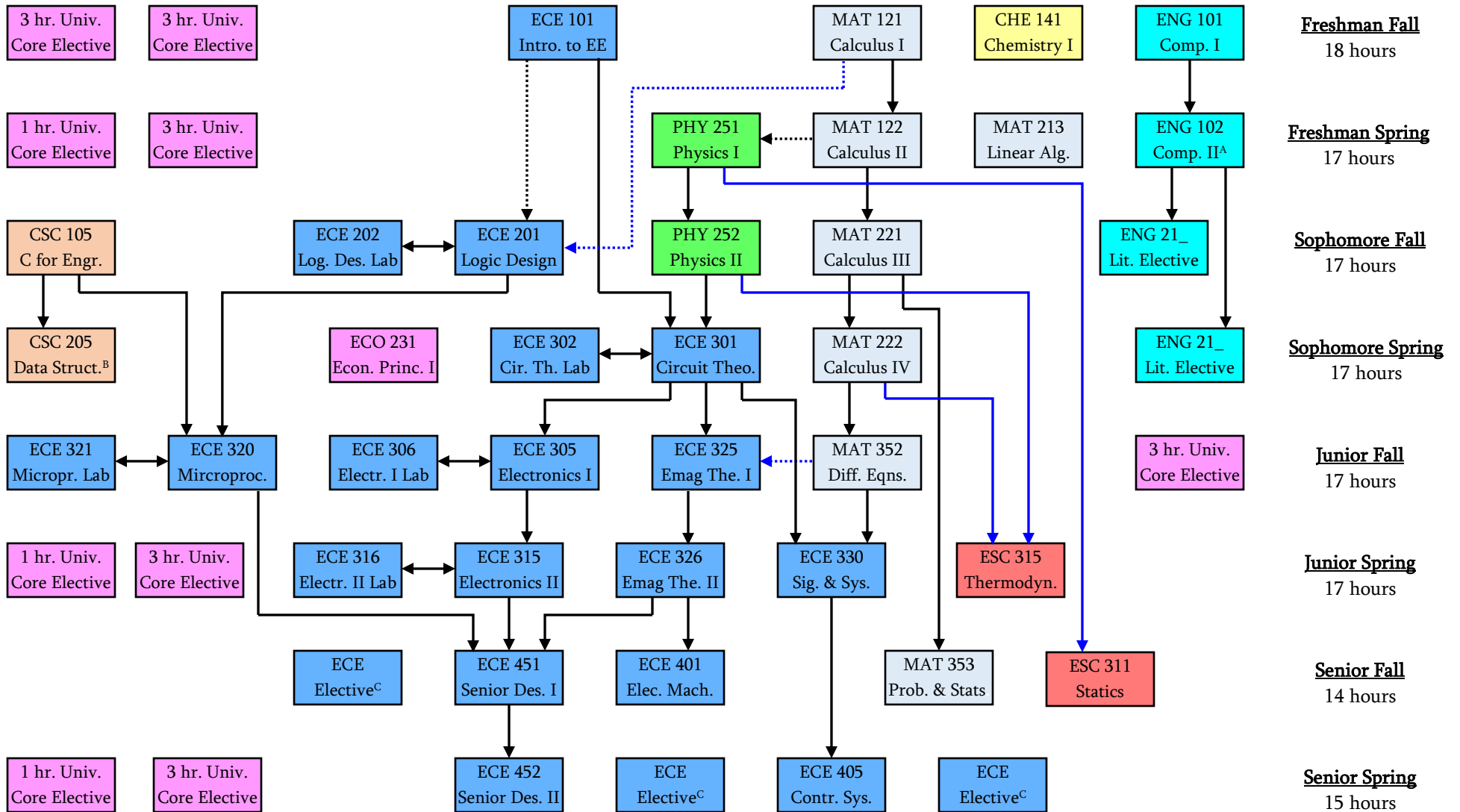




2018-2019 Electrical Engineering Flowchart



^AMust also enroll in ENG 099 Writing Proficiency Exam when registering for ENG 102

^BCan also elect to take ESC 205 Computational Tools or PHY 313 Optics, both of which have a prerequisite of PHY 252

^CSelect any 400-level ECE course with the exception of ECE 401, 405, 451, and 452

- Prerequisite course
- ↔ Co-requisite course
- ⋯ Prerequisite or co-requisite course

Students are also required to complete Chapel requirements based on their classification at the time of enrollment. See the University Catalog for more details.